



To Let: £163.33 Monthly Per Person

Curzon Street, , Derby, DE1 1LN

- Furnished
- Three en-suite bedrooms
- Student Property
- Open plan Living
- "BRAND NEW 2021"
- Inclusive Rent
- SEPTEMBER START
- £112.77 PW

About The Property

****NEW BUILD**SECOND FLOOR**THREE BEDROOM EN-SUITE STUDENT APARTMENT**** Spacious open plan lounge, dining and kitchen with ample room for three students. Kitchen will be furnished with fridge/freezer, washing machine, built in oven & inset hob and lots of cupboards. Two two seat sofa's and television stand in the lounge space along with a 4 seat dining and chairs. Three large bedroom's furnished with modern white furniture, double beds and study areas. Each of the bedrooms have their own en-suites which will be fitted with a white three piece suites comprising hand wash basin, toilet and shower cubicle. Currently under constructions so we are unable to conduct viewings at the moment therefore please look through the designs we have put together and call us with any queries. Available from 15th September 2021. Rent - £490.00 per person per calendar month. Deposit - £490.00 per person. Managed by Blue I

Room Details

Bedroom One

Each bedroom will be furnished with a double bed, wardrobe, chest of drawers, bedside table, study desk and office chair. En-Suite has a white 3 piece suite with hand wash basin, toilet & shower cubicle.

Bedroom Two

As bedroom One.

Dining Room

Open plan living with a 4 seat dining table and 4 dining chairs

Kitchen

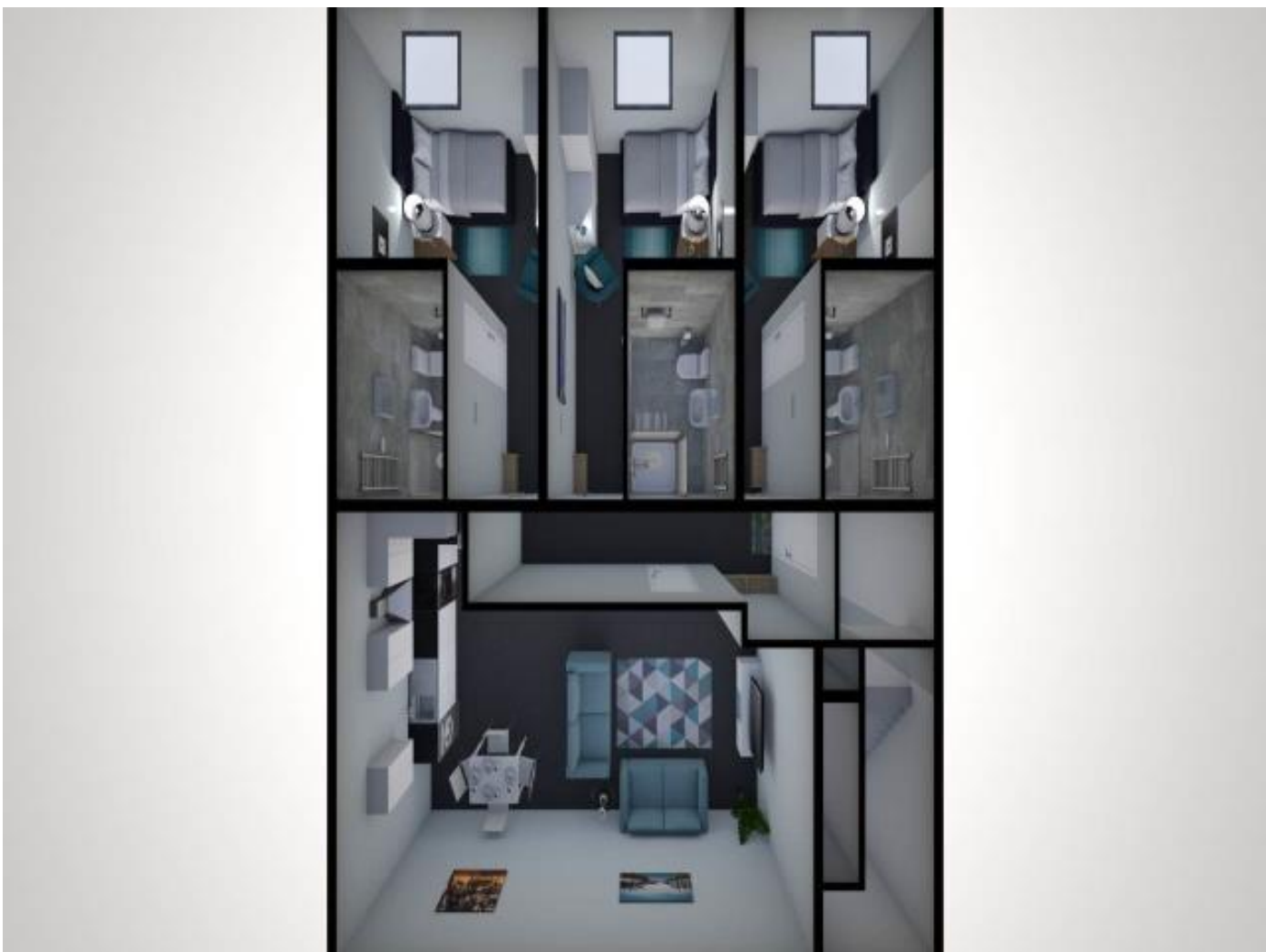
Open plan living space with fitted wall, base & drawer units, sink and drainer, fridge/freezer, built in oven, inset hob, extractor hood and washing machine.

Lounge

Open plan living space where you will have 2 two seat sofa's and television stand

Bedroom Three

As bedroom One.





Energy Efficiency Rating		
	Current	Potential
<i>Very energy efficient - lower running costs</i>		
(92-)	A	
(81-91)	B	
(69-80)	C	
(55-68)	D	
(39-54)	E	
(21-38)	F	
(1-20)	G	
<i>Not energy efficient - higher running costs</i>		
England & Wales	EU Directive 2002/91/EC	

Environmental Impact (CO ₂) Rating		
	Current	Potential
<i>Very environmentally friendly - lower CO₂ emissions</i>		
(92-)	A	
(81-91)	B	
(69-80)	C	
(55-68)	D	
(39-54)	E	
(21-38)	F	
(1-20)	G	
<i>Not environmentally friendly - higher CO₂ emissions</i>		
England & Wales	EU Directive 2002/91/EC	

FEE'S:-

- Student, Professional & Families
 - No administration fee's
 - No setup fee's
 - No referencing fee's
 - No guarantor fee's
 - One months rent as a deposit for students
 - 5 weeks rent as a deposit for professionals & families
 - One months rent in advance
- Please note we can not guarantee the complete accuracy of all the information in our marketing material. There maybe some errors, so please